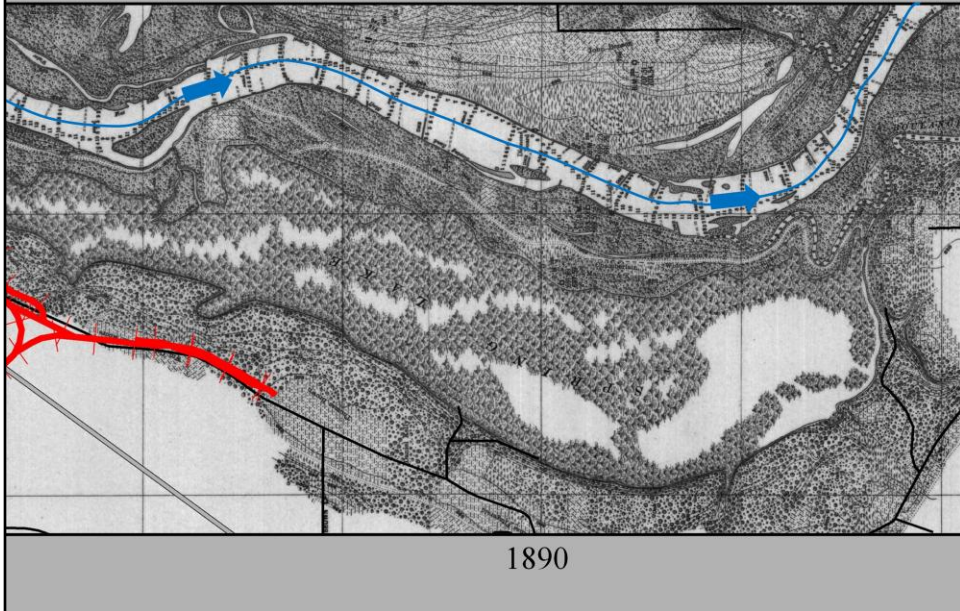


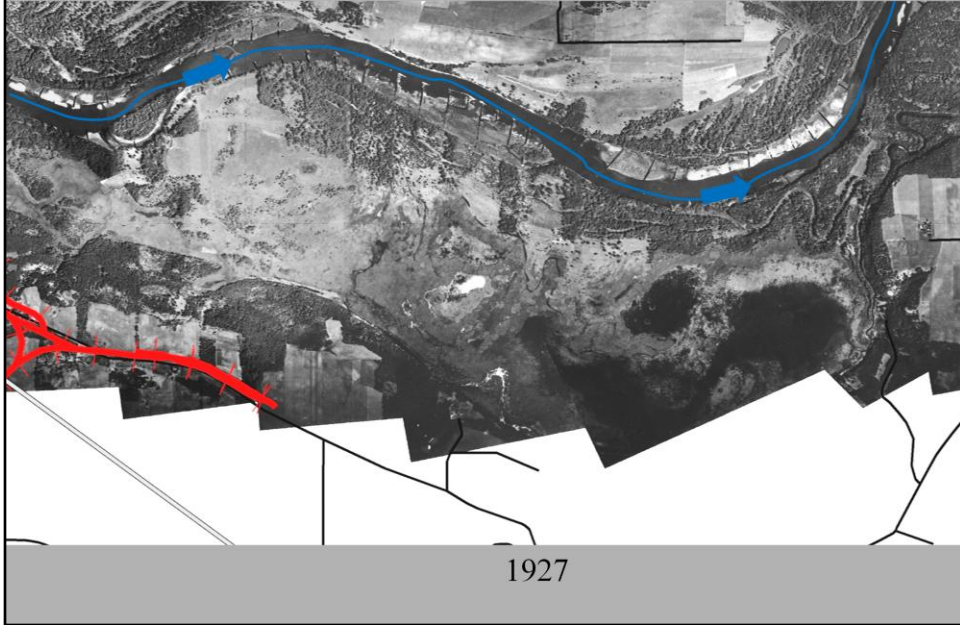
Spring Lake – Pool 2



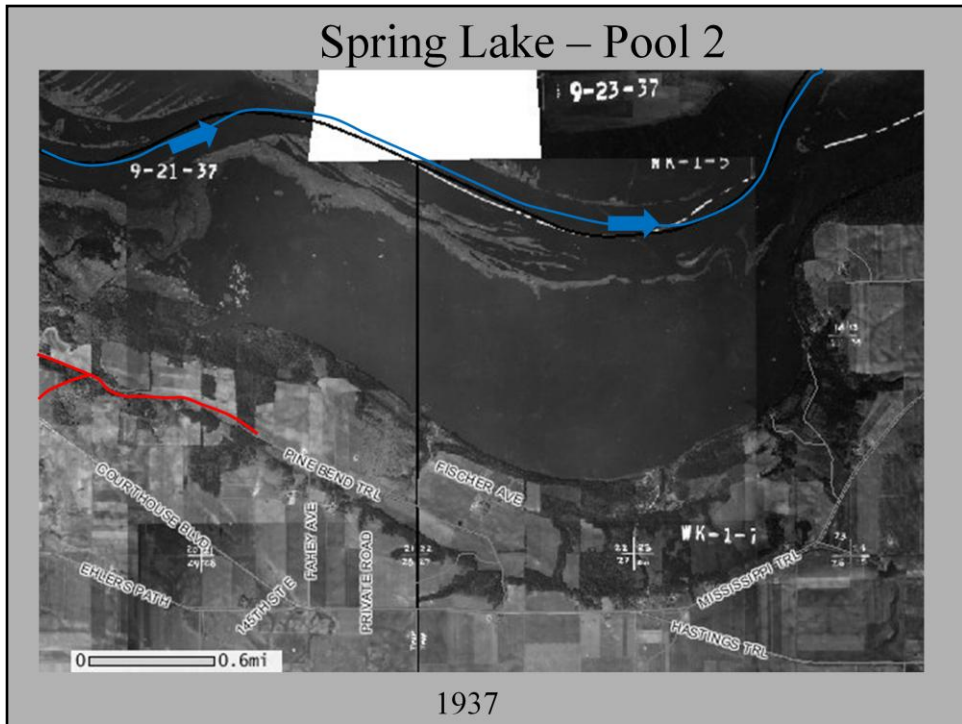
Until the 1850's the area that is now Spring Lake consisted of marshlands, river bottom forests, and some open water. The blue line indicates the main channel of the Mississippi River while the red line shows railroad lines south of what's now Spring Lake.

In 1915, local historian John H. Case noted "The marshes and heavy timber on the bottomlands around Spring Lake and Belanger Island, east of them, in what is now Nininger Township, were full of small game, such as geese, ducks, muskrats, and mink.... The timber consisted of soft maple, cottonwood, elm, hackberry, and ash, most of which was still standing in 1856 when I came to Nininger."

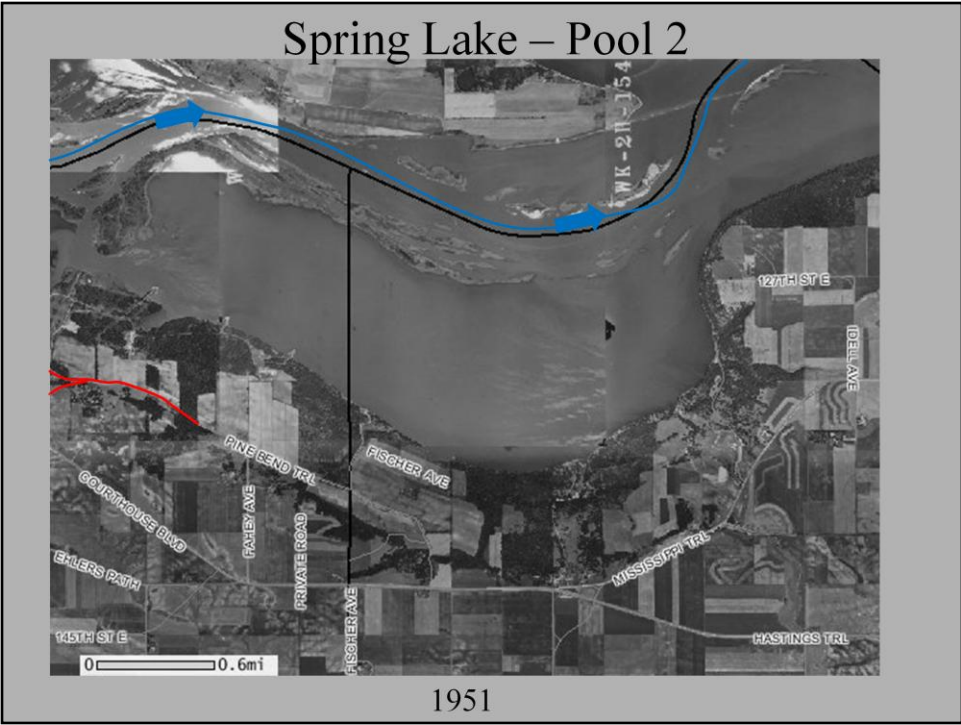
Spring Lake – Pool 2



In the 1850's Spring Lake Mill was built, raising the water level in the eastern half of the lake and allowing habitats for wild rice and even more fish and other animals. But even more changes were on the way.

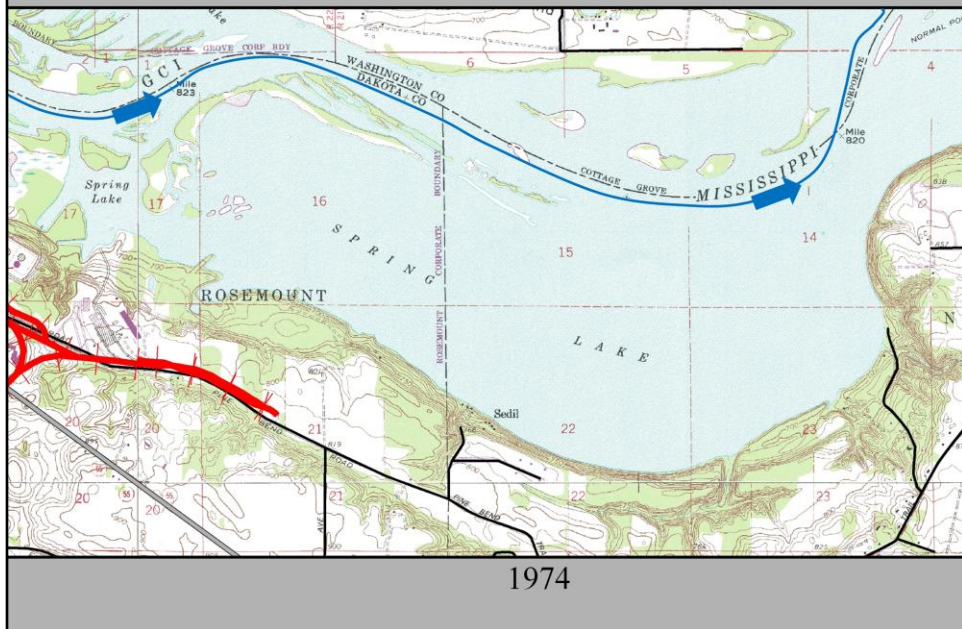


In 1928 Lock and Dam No. 2 at Hastings was built. The land that would be submerged under pooled waters was cleared and the Spring Lake Mill was demolished. The dam's construction caused large areas of the Spring Lake area floodplain to be submerged, displacing existing landuses and highly altering the native landscape.

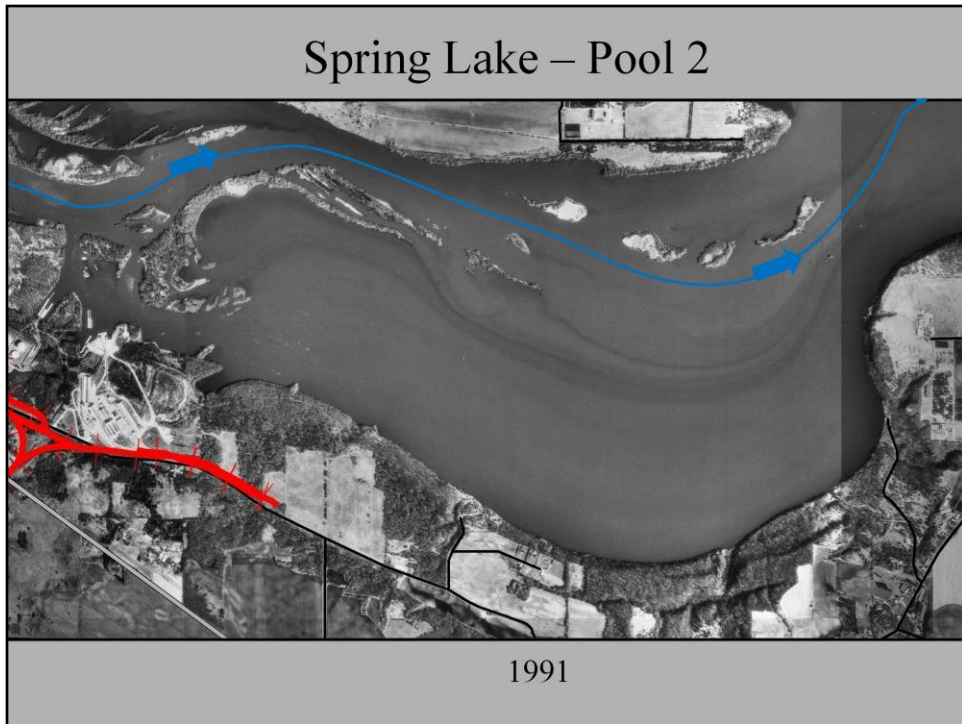


Although water levels, floating debris, and sand bars can shift and alter the look of islands and surface area, there is little change from year to year.

Spring Lake – Pool 2

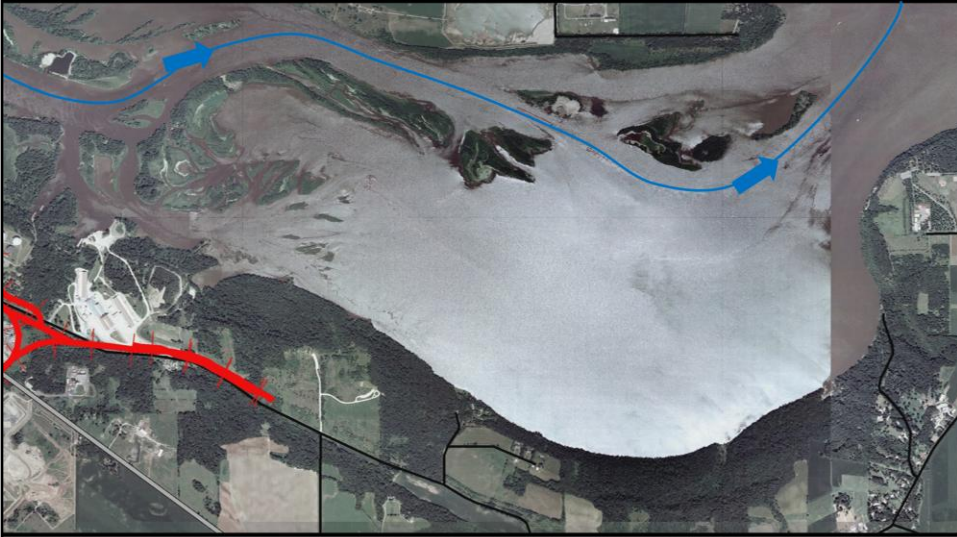


1974 USGS Quad map.



Between 1991 and 2008, notice the formation of the delta area at the upstream end of Spring Lake.

Spring Lake – Pool 2



2003

Spring Lake – Pool 2



2008